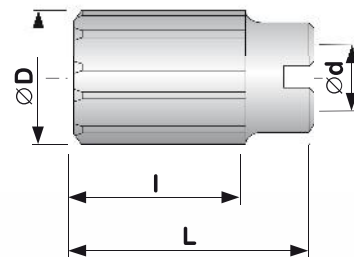


ČSN 221447



Objednáací číslo Order No. Bezeichnung Nr.	ØD mm	L mm	l mm	Ød mm		
B47025XF000S	25	45	32	13	10	0,090
B47026XF000S	26	45	32	13	10	0,100
B47027XF000S	27	45	32	13	10	0,110
B47028XF000S	28	45	32	13	10	0,120
B47029XF000S	29	45	32	13	10	0,130
B47030XF000S	30	45	32	13	10	0,140
B47031XF000S	31	50	36	16	10	0,160
B47032XF000S	32	50	36	16	10	0,170
B47034XF000S	34	50	36	16	10	0,185
B47035XF000S	35	50	36	16	10	0,200
B47036XF000S	36	56	40	19	10	0,230
B47038XF000S	38	56	40	19	10	0,260
B47040XF000S	40	56	40	19	10	0,290
B47042XF000S	42	56	40	19	12	0,330
B47044XF000S	44	63	45	22	12	0,435
B47045XF000S	45	63	45	22	12	0,455
B47046XF000S	46	63	45	22	12	0,475
B47048XF000S	48	63	45	22	12	0,495
B47050XF000S	50	63	45	22	12	0,515
B47052XF000S	52	71	50	27	12	0,640

Objednáací číslo Order No. Bezeichnung Nr.	ØD mm	L mm	l mm	Ød mm		
B47055XF000S	55	71	50	27	12	0,760
B47058XF000S	58	71	50	27	12	0,830
B47060XF000S	60	71	50	27	14	0,900
B47062XF000S	62	80	56	32	14	0,970
B47063XF000S	63	80	56	32	14	1,100
B47065XF000S	65	80	56	32	14	1,160
B47068XF000S	68	80	56	32	14	1,340
B47070XF000S	70	80	56	32	14	1,500
B47072XF000S	72	90	63	40	14	1,670
B47075XF000S	75	90	63	40	14	1,810
B47078XF000S	78	90	63	40	14	2,150
B47080XF000S	80	90	63	40	14	2,240
B47082XF000S	82	90	63	40	14	2,450
B47085XF000S	85	90	63	40	14	2,590
B47088XF000S	88	100	71	50	16	3,100
B47090XF000S	90	100	71	50	16	3,170
B47092XF000S	92	100	71	50	16	3,280
B47095XF000S	95	100	71	50	16	3,430
B47098XF000S	98	100	71	50	16	4,150
B47100XF000S	100	100	71	50	16	4,170



Poznámka: Pro upínání slouží držáky ČSN 241210 (DIN 217).  
Note: For clamping are used arbors ČSN 241210 (DIN 217).  
Bemmerkung: Für das Spannen die Halter ČSN 241210 (DIN 217).

Poznámka: X = lícování výstružníku (7 = H7; 8 = H8; 1 = H11)  
Note: X = tolerances of reamer (7 = H7; 8 = H8; 1 = H11)  
Bemmerkung: X = Reibahlenpassung (7 = H7; 8 = H8; 1 = H11)